

LOADMAC 825 SUPER REACH

Genuine one-side offload | Double stack capability as standard



 **LOADMAC**

Truck Mounted Forklifts



THE NEW NAME FOR TRUCK MOUNTED FORKLIFTS

WELCOME TO LOADMAC – THE NEW NAME FOR TRUCK MOUNTED FORKLIFTS.

Our industry leading 2500kg machines offer unrivalled performance and reliability when a truck mounted forklift is the right choice for your operation. From sheet metal right through to shipping, Loadmac is designed, developed and built in our manufacturing base in Britain, so quality is assured.

Loadmac was founded in 2007 because we thought customers deserved something better. And simply put, our machines are the best. Light and short to improve payload and HGV handling, they are stable even at maximum capacity. There are no complex or unreliable electronics, just robust machines that are easy to operate, maintain and get the job done.

 **THE ONLY TMF
MADE IN BRITAIN**

SUPERIOR REACH, LIFT AND PERFORMANCE

GENUINE ONE-SIDE OFFLOAD

Our patented iSR (integrated second reach) system can comfortably reach the full width of a trailer bed and is capable of double stacking (even inside a curtainsider) with standard forks. Further improvements in hydraulic rams, bushes, bearings help to reduce maintenance, prolong service life and make it the best and most compact one-side offload solution in the world.



Proudly presenting the Loadmac 825 Super Reach truck mounted forklift. With a 2500kg lifting capacity, the Loadmac 825 Super Reach boasts genuine one-side offload, multi-directional steering option and superior reach and stability when working in the toughest conditions.

If you're looking for the top performing truck mounted forklift in the world - look no further than the Loadmac 825 Super Reach



MULTI-DIRECTIONAL STEERING

The perfect function when working with long loads. This option allows the operator to rotate the wheels 90° to enable multi-directional steering, helping to get wide loads through narrow spaces with ease.



TAKE ON ANY TERRAIN

The intelligent design of the Loadmac means the majority of the weight is low in the machine, offering a low centre of gravity and outstanding stability. Combined with the high performance Yanmar engine and high ground clearance means the Loadmac can comfortably take on the toughest under-wheel conditions.



COMPACT DESIGN

When mounted the 825 Super Reach has an overhang from just 1.35m, making it the most compact option in its class. The intelligent machine design creates a versatile and highly manoeuvrable machine without compromising on lifting capacity.



MAN ON THE GROUND MOUNTING

This uncomplicated system ensures maximum reliability and safety when mounting and unmounting the forklift. From the safety of the ground the operator can mount/unmount the machine in less than 60 seconds using the conveniently located levers at the rear of the machine, which are automatically deactivated when the operator is seated for additional safety.

LOADED WITH QUALITY

INTEGRATED SECOND REACH (ISR)
OVERHANG FROM 1.35M
PERSPEX ROOF

CAB COMFORT AND SAFETY
MAN ON THE GROUND MOUNTING
COMPACT DESIGN

49HP YANMAR ENGINE

ALL WHEEL HYDROSTATIC DRIVE WITH
DIFFERENTIAL LOCK

PATENTED RUST PROOFING PROCESS
THROUGHOUT

2500KG LIFTING CAPACITY

OPTIONAL MULTI-DIRECTIONAL STEERING
WITH MAST SAFETY MONITOR

INDUSTRY LEADING VISIBILITY

LOAD RESTS (OPTION)

INTEGRAL SIDESHIFT

HYDRAULIC STABILISER LEGS

GASTRUT ASSISTED SAFETY ARM

LOW CENTRE OF GRAVITY

TILTING FORK CARRIAGE

ANTI-SLIP FLOOR

GROUND LEVEL KEY START

LOW LEVEL FUEL POINT

ANTI-VIBRATION CAB MOUNTS

OPERATOR GRAB HANDLES

ERGONOMIC CONTROLS

FULLY FUNCTIONAL LED
ROAD LIGHTING

STANDARD LED WORKLIGHTS

REAR CHAIN RECOVERY POINTS

MOUNTING CHAIN POINTS

EASILY ACCESSIBLE BATTERY

CORROSION RESISTANT CHAINS

COATED HOSES

REMOVABLE 'BUMPER'
CORNER PLATES

MODULAR FRONT WHEEL PLATES

HIGH VISIBILITY INTERLOCK SEATBELT

EASY CAB ACCESS / EXIT



Truck Mounted Forklifts



THE DRIVER'S CHOICE

The responsive and powerful machine performance combines with a low centre of gravity. Additional features such as anti-vibration and comfortable seat, provide unrivaled levels of ride quality and driver comfort.

FOR YOUR COMFORT AND SAFETY

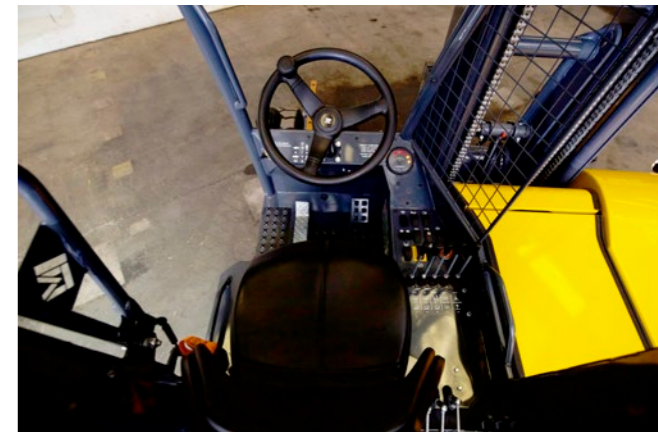


Consistently regarded as the driver's favourite truck mounted forklift, the Loadmac 825 Super Reach is designed to keep operators safe, comfortable and working at their most productive.



ERGONOMIC CONTROLS

The easy-to-use and intuitive controls are conveniently located within easy reach of the operator.



CAB DESIGN

The ROPS/FOPS certified cab provides a large and ergonomically designed working space for operators, while the Perspex roof keeps operators covered whatever the weather. Conveniently located grab handles enable safe and easy machine entry and exit.



SUPERIOR VISIBILITY

Operators enjoy excellent all-round visibility from their position on the left side, while the low bonnet design reduces blind spots on the right. The result is increased productivity and safety for those inside and outside of the machine.



SAFETY FIRST

The 825 Super Reach is packed with features to keep the operator safe including anti-slip floor, high-visibility interlock seatbelt and gastrut assisted safety arm. When working with the optional multi-directional mode, the Mast Monitor system provides operators with an audible and visual alert to ensure the forks are in their optimum position.

BUILT TO LAST

 THE ONLY TMF
MADE IN BRITAIN

INDUSTRY LEADING DURABILITY

All Loadmac truck mounted forklifts undergo an industry leading triple-coat paint process throughout, providing the highest levels of weather protection. What's more, all switches and control panels are IP66/IP67. For further durability, all Loadmacs feature coated hoses, corrosion resistant chains and componentry from world-renowned suppliers including Bucher hydraulics, Poclairn motors and Hatz, Kubota and Yanmar engines.



Truck mounted forklifts need to endure some of the toughest conditions around, taking on the demands of the road and delivery locations day after day. That's why we put quality and durability at the heart of the Loadmac 825 Super Reach. The machine design, manufacturing process and rigorous testing all help to ensure the Loadmac is a machine which delivers performance and reliability that lasts.



UNCOMPLICATED DESIGN

Straightforward design and high quality engineering – that's the secret to the outstanding reliability of the Loadmac 825 Super Reach. No unnecessary electrical or ECU components reduces complexity to ensure the machine is big on uptime and gets the job done.



END-TO-END MANUFACTURING

Every Loadmac 825 Super Reach is designed and manufactured from start-to finish by our highly skilled team at our production facility in Great Britain. Each machine arrives at the factory as raw materials and leaves as a completed product. This means we can ensure the highest levels of quality control at every stage of the manufacturing process.



TESTED IN THE HARSHTEST ENVIRONMENTS

From the freezing temperatures, anti-freeze and road salt of Northern Canada to the extreme heat, dust and dryness of the Australian outback; the Loadmac 825 Super Reach has been successfully tested in the world's most extreme environments to ensure ultimate machine durability and longevity.



SIMPLE TO SERVICE

Routine checks and maintenance are a vital part of keeping your machine working at its best. The Loadmac is designed to make routine maintenance quick and easy with convenient ground level access to the battery, engine compartment and all essential maintenance and lubrication points

LOADMAC IN ACTION: EP BARRUS



EP Barrus is a specialist transport provider based in Oxfordshire, United Kingdom. The company specialise in the transport of large and heavy products, such as equipment engines, making a truck mounted forklift a vital part of their operation. The company operate 5 Loadmac 825 Super Reach as part of their fleet having taken their first Loadmac machine in 2013.

EP BARRUS HAS BEEN OPERATING IN DISTRIBUTION FOR OVER 100 YEARS. THEY HAVE FIVE LOADMACS IN THEIR FLEET.



“ The type of products we are moving tend to be not conducive to third party carriers due to their size. Therefore we need the truck mounted forklift to get the product off the vehicle and allow our customer base to move the product about.

I would suggest to anybody looking to purchase a truck mounted forklift to choose Loadmac.

The truck mounted forklift concept allows us to provide a first-rate customer service. Loadmac produce very good products and their customer service levels are second to none. ”

Rob Malone, Transport Manager - EP Barrus

TECHNICAL INFORMATION

Load centre	600mm
Lifting capacity	2500kg
Unladen weight (Including ISR one-side offload system)	2725kg
Yanmar 4 cylinder diesel engine	49hp – 36.5kw
Maximum engine RPM	3000
Drive wheels	3
Steering	Hydrostatic
Rear wheel steering	Slew ring
Rear wheel steering	180°
Rear wheel diameter	27"
Wheel base	1625mm
Truck length (27" front wheel)	2140mm
Truck width	2350mm
Truck height to cab roof	2410mm
Frame opening	1640mm
Maximum overhang on host vehicle	1350mm
Maximum gradability	35%
Maximum speed	9mph
Side shift	150mm
Tilting angles (Forwards/Backwards)	12°/10°
Reach	2400mm
Ground clearance	300mm
Maximum circuit service pressure	250 bar
Maximum driveline pressure	350 bar
Tilting carriage	Standard
Fixed mast	Standard
ROPS/FOPS cabin	Standard
Integrated Second Reach (ISR)	Standard
Man on the ground mounting controls	Standard

MAST HEIGHT OPTIONS

Available mast heights	3.1m / 3.6m
3.1m mast height minimum	2430mm
3.6m mast height minimum	2690mm
3.1m mast height maximum	4800mm
3.6m mast height maximum	5380mm

LOADMAC 825 SUPER REACH



KEY OPTIONS

Multi-directional steering; with mast safety monitor and automatic side travel lighting
Choice of tyre sizes and treads
Corporate paint colours
Specialist attachments
Lockable fuel filler caps
Removable weather-proof seat covers
Spare wheels and tyres
Mirror packages
Mounting kit (supply only)
Mast lock valves (for sliding box kit use)
Auxiliary hydraulic functions

NATIONWIDE SUPPORT

With our dealer network and service partners throughout the UK, Loadmac provides the most comprehensive back-up on the market.



**THE ONLY TMF
MADE IN BRITAIN**

**IN YOUR
CORNER**

From the UK where our machines are built, to Australia where we are market leader, and everywhere in between, Loadmac is trusted by customers worldwide. Wherever you are you can be sure that our comprehensive global dealer network is on hand to support you with product advice, procurement options and aftersales support.



**GET IN TOUCH TO
CONTACT YOUR
LOCAL DEALER**

www.loadmac.com

info@loadmac.com

+44 (0)1989 563656



Truck Mounted Forklifts